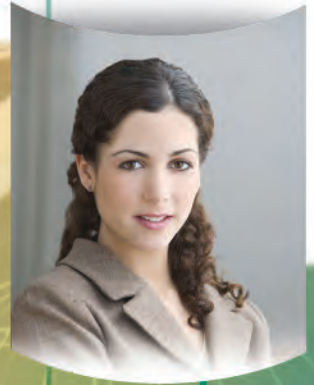


# Canon



CORPORATE SOLUTIONS



 **Color  
imagerunner®**  
C3480 / C3080 SERIES

**meap**  
POWERED BY I

# SPECIFICATIONS



## MAIN UNIT

Type:	Color Digital Multifunction Imaging System
Copying Method:	Laser Dry Electrostatic Transfer
Developing System:	Dry Dual Component Developing System
Memory:	Standard 1GB RAM Maximum 1.5GB RAM
Hard Disk Drive:	80GB
Network Interface Connections:	10/100Base-TX (RJ-45)
Other Interface:	USB 2.0 (Device), USB 2.0 (Host)
First-Copy Time:	8.9 Seconds (Color) 5.9 Seconds (B/W)
Warm-Up Time:	38-Seconds After Powering On
Copy/Print Speed (B/W, Color):	C3480/C3480i: 34/30 ppm (Letter) C3080/C3080i: 30/28 ppm (Letter)
Scan Resolution:	600 dpi x 600 dpi
Copy Resolution:	600 dpi x 600 dpi
Engine Resolution:	1200 dpi x 1200 dpi
Halftone:	256 Gradations (Continuous-Tone)
Paper Sources	
Standard:	Dual 550-Sheet x 2 Paper Cassettes 50-Sheet Stack Bypass
Optional:	Dual 550-Sheet x 2 Paper Cassettes 2,700-Sheet Paper Deck
Maximum:	4,950 Sheets
Paper Sizes	
Drawers:	12" x 18" +, 11" x 17" +, Legal, Letter, Letter-R, Statement-R, Executive
Bypass:	12-5/8" x 17-11/16", 12" x 18", 11" x 17", Legal, Letter, Letter-R, Statement, Statement-R, Executive, Irregular size (3-7/8" x 5-9/16" to 12-5/8" x 18") and Envelopes
Acceptable Paper Weight	
Drawers:	17 lb. Bond to 90 lb. Index
Bypass:	17 lb. Bond to 110 lb. Index
Duplexing:	Standard Automatic Trayless Duplexing (Executive to 12" x 18")
Image Reader:	Standard
Acceptable Originals:	Sheet, Book, 3-Dimensional Objects (Up to 4.4 lb.)
Max. Original Size:	11" x 17"
Document Feeding Method:	Duplexing Automatic Document Feeder (Standard on "i" Models)
Acceptable Originals:	Statement to 11" x 17"
Paper Capacity:	50 Sheets
Acceptable Paper Weight of Originals:	Simplex 11 lb. to 32 lb. Bond (42 to 128 g/m <sup>2</sup> ) Duplex 13 lb. to 32 lb. Bond (50 to 128 g/m <sup>2</sup> )
Scan Speed:	44 ipm (300 dpi) 28 ipm (600 dpi)
Dimensions (H x W x D):	31-1/8" x 22-1/4" x 29-3/4" (Main Unit) 36" x 22-1/4" x 29-3/4" (with DADF)
Installation Space (W x D):	34" x 29-3/4" (when the Stack Bypass is extended)
Weight:	Approximately 256 lb. (116kg Main Unit) Approximately 275 lb. (125kg with DADF)
Power Requirements:	120V AC, 60Hz, 15A

Power Consumption:	1,500W
Plug:	NEMA 5-15P
Toner (Estimated Yield):	Black: 26,000 Images @ 5% Coverage Color: 14,000 Images @ 5% Coverage
<b>Copy Features</b>	
Multiple Copies:	1 to 999
Max. Copy Reservation:	10 Jobs
Color Mode:	Auto Color, Full Color, Black, Single Color, Two Colors
Copy Exposure:	Automatic or Manual (9 Levels)
Magnification	
Preset Reduction:	25%, 50%, 64%, 73%, 78%
Preset Enlargement:	121%, 129%, 200%, 400%
Zoom Mode:	25% - 400% (1% increments)
<b>Print Features</b>	
CPU:	Canon Dual Custom Processor (Shared)
Memory:	1GB RAM (Standard) 1.5GB RAM (Maximum) (Shared)
Hard Disk Drive:	80GB (Shared)
Print Resolution	
UFR II:	1200 dpi x 1200 dpi ++ 2400 dpi equivalent x 600 dpi
Printer Driver	
UFR II:	Windows® (Windows 2000/XP/Server 2003/Windows Vista®) Citrix MetaFrame Macintosh® (OS 10.2.8 or later)
XPS:*	Windows Vista
<b>Mail Box Features</b>	
Max. Mail Boxes Supported:	100 User Inboxes, One Memory RX Inbox, 50 Confidential Fax Inboxes
<b>Scan Features</b>	
Network TWAIN Scan:	Standard
Network Scan Utility:	Color Network ScanGear
<b>Color Universal Send Features</b>	
Color Mode:	Auto Color Select (Full Color/Grayscale) Auto Color Select (Full Color, B/W) Full Color, Grayscale, B/W
Address Book Capacity:	Max. 1,800 Destinations (Includes 200 One-Touch Buttons) Max. 5 LDAP Servers
Sending Methods:	E-mail, I-fax, SMB, File Server (FTP, IPX, WebDAV), User Inbox, Super G3 Fax (Optional)
Communication Protocol	
File:	FTP (TCP/IP), SMB (TCP/IP), NCP (IPX), WebDAV
E-mail/I-fax:	SMTP, POP3, I-fax (Simple, Full)
Data Format	
File, E-mail:	TIFF, JPEG, PDF, PDF (Compact),** PDF (Trace & Smooth),** PDF (OCR),** Encrypted PDF,*** Digital Signature PDF (Device,*** User*)
I-fax:	B/W: TIFF (MH, MR, MMR) Color: TIFF (Profile-C)
<b>OPTIONAL ACCESSORIES</b>	
<b>Super G3 Fax Board-W2/Super G3 Multi-Line Fax Board-J2</b>	
Applicable Line:	Public Switched Telephone Network (PSTN)

DADF-L1	Platen Cover Type H
Document Tray-J1	Copy Tray-J1
Connection Lines:	One-Line (Super G3 Fax Board W2), Two-Lines (Super G3 Multi-Line Fax Board-J2)
Sending/Original Size:	Statement to 11" x 17"
Recording/Printing Size:	Statement to 11" x 17"
<b>PCL Printer Kit-Q3 (Standard for "i" Models)††</b>	
CPU:	Canon Dual Custom Processor (Shared)
Memory:	1GB RAM (Standard) 1.5GB RAM (Maximum) (Shared)
Hard Disk Drive:	80GB (Shared)
Supported PDL:	PCL 5c/6
Optional PDL Support:	PostScript 3 Emulation (PS Printer Kit-Q3†††)
Print Resolution	
PCL 5c:	2400 dpi equivalent x 600 dpi
PCL 6:	1200 dpi x 1200 dpi ++ 2400 dpi equivalent x 600 dpi
PS3 (Optional):	1200 dpi x 1200 dpi ++ 2400 dpi equivalent x 600 dpi
Printer Drivers	
PCL 5c/6:	Windows (Windows 98/Me/2000/XP/Server 2003/Windows Vista) Citrix MetaFrame
PS3 (Optional):	Windows (Windows 98/Me/2000/XP/Server 2003/Windows Vista) Citrix MetaFrame Macintosh (OS 10.2.8 or later)
<b>imagePASS-J1</b>	
Connectable Device:	Color Image RUNNER C3480/C3080
CPU:	Celeron M 1.2GHz
System:	System 8e
Memory:	256MB (Std.)/512MB (Max.)
Hard Disk Drive:	80GB
Interfaces (to LAN):	10/100/1000Base-T (RJ-45)
Supported PDL:	Adobe® PostScript® 3, PCL 5c
Print Resolution:	1200 dpi x 1200 dpi ++ 2400 dpi equivalent x 600 dpi
Utility Software:	Remote Scan Command WorkStation for Windows Command WorkStation for Mac
EFI Options:	256MB RAM, Secure Erase v1.0, Hot Folders v2.0, Impose v2.6
<b>Cassette Feeding Unit-Y3</b>	
Paper Sizes:	12" x 18", 11" x 17", Legal, Letter, Letter-R, Statement-R, Executive
Paper Drawers Capacity:	550-Sheet x 2 Cassettes [20 lb. Bond (80 g/m <sup>2</sup> )]
Dimensions (H x W x D):	9-7/8" x 22-1/4" x 27-5/8"
Weight:	Approximately 50.7 lb. (23kg)
<b>Paper Deck-Z1</b>	
Paper Size:	Letter
Paper Deck Capacity:	2,700 Sheets [20 lb. Bond (80 g/m <sup>2</sup> )]
Dimensions (H x W x D):	18-5/8" x 14-5/8" x 23-1/4"
Installation Space (W x D):	36-7/8" x 29-3/4"
Weight:	Approximately 65.3 lb. (29.6kg)
<b>Finisher-Z1</b>	
Number of Trays:	One Tray
Paper Size	
Standard:	12-5/8" x 17-11/16", 12" x 18", 11" x 17", Legal, Letter, Letter-R, Statement, Statement-R, Envelopes (COM10 No. 10, Monarch, DL, ISO-B5, ISO-C5, Yougata 4, Catalog Glove No.8)

Non-Standard Size:	3-7/8" x 5-9/16" to 12-5/8" x 18"
Paper Weight:	17 lb. Bond to 80 lb. Cover
Paper Capacity Per Tray:	500 Sheets (Letter, Statement, Statement-R) or 2-3/4" in Height 250 Sheets (11" x 17", Legal, Letter-R) or 1-3/8" in Height
Paper Capacity of Staple Mode:	500 Sheets/30 Sets (Letter) or 2-3/4" in Height 250 Sheets/30 Sets (11" x 17", Legal, Letter-R) or 1-3/8" in Height 500 Sheets/30 Sets (Staple Mode with Different Paper Sizes) or 2-3/4" in Height
Max. Stapling Capacity Letter:	50 Sheets (17 lb. to 20 lb. Bond) 30 Sheets (20 lb. to 28 lb. Bond) 2 Sheets (32 lb. Bond to 90 lb. Index)
11" x 17", Legal, Letter-R:	30 Sheets (17 lb. to 20 lb. Bond) 20 Sheets (20 lb. to 28 lb. Bond) 2 Sheets (32 lb. Bond to 90 lb. Index)
Staple Mode:	Corner (11" x 17", Legal, Letter, Letter-R) Double (11" x 17", Letter)
Dimensions (H x W x D):	8-1/2" x 27-3/8" x 21-5/8"
Installation Space (W x D):	42" x 29-3/4" (when the Auxiliary Tray is extended)
Weight:	Approximately 26.5 lb. (12kg)
<b>Finisher-Y1/Saddle Finisher-Y2</b>	
Number of Trays:	Two Trays
Paper Size	
Standard:	12-5/8" x 17-11/16", 12" x 18", 11" x 17", Legal, Letter, Letter-R, Statement, Statement-R, Executive
Non-Standard Size:	3-7/8" x 5-9/16" to 12-5/8" x 18"
Paper Weight:	17 lb. Bond to 80 lb. Cover
Paper Capacity Per Tray	
Upper/Lower Tray:	1,000 Sheets (Letter, Statement, Statement-R, Executive) 500 Sheets (11" x 17", Legal, Letter-R)
Paper Capacity of Staple Mode	
Upper/Lower Tray:	1,000 Sheets/30 Sets (Letter, Executive) 500 Sheets/30 Sets (11" x 17", Legal, Letter-R) 500 Sheets/30 Sets (Staple Mode with Different Paper Sizes)
Max. Stapling Capacity Letter, Executive:	50 Sheets (17 lb. to 20 lb. Bond) 30 Sheets (20 lb. to 28 lb. Bond) 2 Sheets (32 lb. Bond to 80 lb. Cover)
11" x 17", Legal, Letter-R:	30 Sheets (17 lb. to 20 lb. Bond) 20 Sheets (20 lb. to 28 lb. Bond) 2 Sheets (32 lb. Bond to 80 lb. Cover)

Staple Mode:	Corner (11" x 17", Legal, Letter, Letter-R, Executive) Double (11" x 17", Legal, Letter, Letter-R, Executive)
Saddle-Stitching <sup>▲</sup>	
Acceptable Paper Sizes:	12" x 18", 11" x 17", Legal, Letter-R
Saddle-Stitch Capacity:	15 Sheets (17 lb. to 20 lb. Bond) 10 Sheets (20 lb. to 28 lb. Bond)
Tray Capacity:	25 Sets (1 to 5 Sheets) 15 Sets (6 to 10 Sheets) 10 Sets (11 to 15 Sheets)
Dimensions (H x W x D)	
Finisher-Y1:	42-1/4" x 26-1/8" x 25-7/8"
Saddle Finisher-Y2:	42-1/4" x 29-3/8" x 25-7/8"
Installation Space (W x D)	
Finisher-Y1:	59-3/8" x 29-3/4" (when the Auxiliary Tray is extended)
Saddle Finisher-Y2:	63-1/4" x 29-3/4" (when the Auxiliary Tray is extended)
Weight	
Finisher-Y1:	Approximately 96.1 lb. (43.6kg)
Saddle Finisher-Y2:	Approximately 162 lb. (73.6kg)
<b>Inner 2-Way Tray-D1</b>	
Paper Size	
Standard:	12-5/8" x 17-11/16", 12" x 18", 11" x 17", Legal, Letter, Letter-R, Statement, Statement-R, Executive
Non-Standard:	3-7/8" x 5-9/16" to 12-5/8" x 18"
Max. Paper Weight:	17 lb. Bond to 80 lb. Cover
Paper Capacity Per Tray	
Upper Output Tray:	100 Sheets (Letter) 50 Sheets (Other Sizes)
Lower Output Tray:	250 Sheets (Letter) 100 Sheets (Other Sizes)
Dimensions (H x W x D):	6" x 7" x 21-1/2"
Installation Space (W x D):	34" x 29-3/4"
Weight:	Approximately 8.6 lb. (3.9kg)
<b>Puncher Unit-M1<sup>▲▲</sup></b>	
Paper Size	
Standard:	11" x 17", Legal, Letter, Letter-R, Executive
Max. Paper Weight:	17 lb. Bond to 80 lb. Cover
Punch Type:	3 Holes (Letter, 11" x 17") 2 Holes (Legal, Letter-R, Executive)
Punch Waste Tray Capacity:	When Approximately 3,000 Sheets of Paper Have Been Punched
Dimensions (H x W x D):	37-1/8" x 4-1/4" x 24-1/2"
Weight:	Approximately 15.9 lb. (7.2kg)

**OTHER OPTIONAL ACCESSORIES**

- Encrypted Secured Print Software-C1<sup>■</sup>
- Barcode Printing Kit-A1<sup>■</sup>
- Web Access Software-E1<sup>†</sup>
- Universal Send PDF Advanced Feature Set-A1<sup>††</sup>
- Universal Send PDF Security Feature Set-A1<sup>††</sup>
- Digital User Signature PDF Kit-A1<sup>†††</sup>
- Secure Watermark-A1<sup>†††</sup>
- Super G3 Fax Board-W2
- Super G3 Multiline Fax Board-J2
- iR 512MB Expansion RAM-C1
- HDD Data Erase Kit-A1
- HDD Data Encryption Kit-B1
- Voice Guidance Kit-B1<sup>◦</sup>
- Voice Operation Kit-A1<sup>◦</sup>
- Remote Operator's Software Kit-A2
- Platen Cover Type H<sup>▲</sup>
- Copy Tray-J1
- Envelope Feeder Attachment-C2
- FL Cassette-Y1
- FL Cassette-Z1
- Document Tray-J1
- Card Reader-C1
- Card Reader Kit-B1
- Key Switch Unit-A2
- Braille Label Kit-A1
- ADF Access Handle-A1
- Stamp Unit-A1
- eCopy Suite
- imageWARE Suite
- Access Management System Kit-A1
- Workflow Composer-B3
- Wireless Network Interface Adapter NB-W1<sup>▲▲</sup>

**Footnotes:**

- + Not available in top cassette.
- + + If 1200-dpi print is selected, engine speed will slow down.
- \* Check with your Authorized Canon Dealer for availability.
- \*\* When configured on C3480/C3080 models, requires Universal Send PDF Advanced Feature Set-A1.
- \*\*\* When configured on the C3480/C3080 models, requires Universal Send PDF Security Feature Set-A1.
- † Requires Digital User Signature Kit-A1.
- †† Color UFR II Printing is standard on C3480/C3080 Series models.
- ††† Requires imageRUNNER 512MB Expansion RAM-C1.
- ▲ Available with Saddle Finisher-Y2 only.
- ▲▲ Puncher Unit-M1 can only be installed with either the Finisher-Y1 or Saddle Finisher-Y2.
- When configured on the C3480/C3080 models, requires PCL Printer Kit-Q3.
- ♦ Requires PS Printer Kit-Q3 if printing PDF files.
- ♦♦ Standard on C3480i/C3080i models.
- Voice Guidance Kit-1 and Voice Operation Kit-A1 cannot be installed together.
- ▲ Option on C3480/C3080 models.
- ▲▲ Not supported with imagePASS-J1.

**Canon**  
image*ANYWARE*

As an ENERGY STAR<sup>®</sup> Partner, Canon U.S.A., Inc. has determined that these products meet the ENERGY STAR guidelines for energy efficiency. ENERGY STAR and the ENERGY STAR mark are registered U.S. marks. Microsoft and Windows are registered trademarks of Microsoft Corporation in the United States and/or other countries. Adobe, Illustrator, and PostScript are registered trademarks or trademarks of Adobe Systems Incorporated in the United States and/or other countries. Intel and Celeron are trademarks or registered trademarks of Intel Corporation or its subsidiaries in the United States and/or other countries. CANON, IMAGERUNNER, MEAP, and the GENUINE logo are registered trademarks of Canon Inc. in the United States and may also be registered trademarks or trademarks in other countries. IMAGEWARE is a registered trademark of Canon U.S.A., Inc. in the United States and is a trademark of Canon Inc. in certain other countries. IMAGEANYWARE is a trademark of Canon. All referenced product names and other marks are trademarks of their respective owners. Specifications and availability subject to change without notice.  
©2008 Canon U.S.A., Inc. All rights reserved.

Federal Law prohibits copying of certain documents. Violators may be subject to penalties. We suggest that you check with your own legal counsel. Canon U.S.A., Inc. and Canon Canada, Inc. intend to cooperate with Law Enforcement Agencies in connection with claims of unauthorized copying.

